



**BiRÒ**



[WWW.GOKARTS-ATVS.COM](http://WWW.GOKARTS-ATVS.COM)





Birò, the first 100% electric, 4-wheeled personal commuter with removable battery. Ultra compact, eco-friendly, silent. Allowing you to travel freely in the restricted traffic zones of many cities and park easily in scooter spaces.

**BIRO**



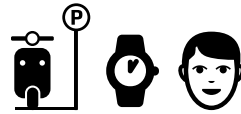


Free to Move.



## Drive small, think big.

With Birò, it is easier to travel in the city. Thanks to its compact size you can navigate easily through urban traffic, freely enter the restricted traffic zones of many cities, and park easily in scooter spaces. Planning your day becomes a pleasure, because with Birò you can move about more often, saving time and avoiding stress, combining work and free time. There are so many advantages to a personal commuter that is small, practical and intelligent.



## Open minded.

Forget about keys. Birò works with a keyless system that opens the driver's side door and starts the engine, which is activated by the Birò Card. Just like a credit card, this magnetic card has a unique alphanumeric code and can be kept in your wallet, purse, or wherever you like. The Birò Card is practical, simple and secure: be worry-free, move about with peace of mind.



## Personal but social.

Birò, the personal commuter, is designed with all sorts of useful internal compartments to hold everything you need for your professional and everyday life. It is small and personal, but it's also very sociable, because it has been designed with two seats, side by side, so you can travel with whomever you choose.



**1 Birò = 1 scooter space**



**4 Biròs = 1 standard parking space**



**100% Electric**





## Electric eclectic.

It is the silence that makes you feel truly free. Four agile wheels and two 100% electric Brushless motors, mounted on the two back wheels, with no transmission system, thereby eliminating additional weight and cutting maintenance costs. No emissions, no noise pollution no petrol consumption. Bird not only saves you money, but is so enjoyable to drive, and particularly dynamic thanks to its Boost lever, which you can activate when necessary to give you that extra bit of acceleration for moving off, or travelling up those steeper hills.



## Mobile sound.

Choose the soundtrack to your journey, and use your mobile safely. Thanks to the portable Bluetooth speaker you can connect your smartphone to listen to your favourite playlist and to make or receive hands-free calls, without the need for cables or earphones. Listen to music even outside the vehicle: you can easily remove the Bluetooth speaker and bring it with you.



## Liberation movement.

Choosing to drive around in a fully electric and light vehicle that respects the environment; choosing to travel in a clean, silent way eliminating conventions and emissions; choosing to reduce petrol and waste consumption leaving behind ties and worries gives a wonderful sense of freedom.

A world of possibilities is in front of you when, how, and where you want it. Choose to be free.



A man with light brown hair and a beard, wearing a dark suit jacket over a light blue shirt, is seen from the chest up, driving a car at night. The view is through the windshield, showing the car's interior and the blurred city lights and buildings outside. The text "Positive Driving." is overlaid in white on the center of the image.

Positive Driving.

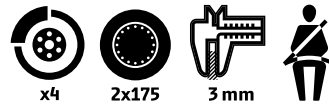






## Space for safety.

There is no freedom without safety. That is why Birò is fitted with 4 disk brakes, 175 width rear tyres, and its frame is manufactured in 3 mm steel tubing to make the cabin as strong and resistant as possible. On top of this, two round structures in thick, high-density ABS plastic guarantee high shock absorption. The side doors, the headrests and the armrests on both sides make sure you always feel comfortable and protected, with everything that you need in an ultra-compact space.



## Total vision.

Broaden your driving vision. This too is about freedom and safety, because Birò has a cabin with wide and transparent surfaces which offer you complete 345-degree views, guaranteed in any condition by the defrost grid windscreen. Relish the city: Birò is the personal commuter for anyone who has clear ideas about mobility.



## Full protection.

Summer or winter, day or night; with Birò you can always travel when and where you want to. You're well protected from the rain, cold and wind in the colder seasons. The roof and the hardened back windscreen can be opened, and the polycarbonate doors are removable within a few seconds to let in light and air in the hotter seasons.



A black and green electric car is parked on a cobblestone street in a city park. The car is the central focus, shown from a side profile. The background features lush green trees, a stone staircase, and a tall skyscraper in the distance under a bright sky. The text "Recharge your Energy." is overlaid in white on the car's side.

Recharge  
your Energy.







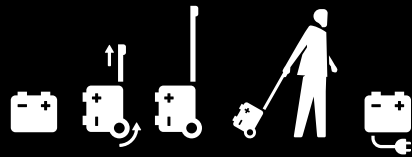
220 V





## Easy Move and Re-Move.

Birò's energy is always with you, because it is the only 4-wheeled personal commuter to be fitted with the **Re-Move** removable electric battery system. Once your Birò is parked, it is easy to remove the battery unit and take it to your house, your office, or wherever is most convenient, to recharge your batteries with ease, meaning that you can drive further in a single day. This is a very useful system if you don't have a personal parking space, but it also helps you to organise your travel as efficiently as possible.



## Power of freedom.

Which type of energy works best for you?

Now you can choose the battery whose battery life and recharge time suit your lifestyle, and your personal travel requirements.

Lead battery if you are regular on your moves. **Lithium Re-Move (removable)** battery if you want to recharge your battery where it suits you, without limiting battery life. **Lithium Maxi** battery if you drive a long way every day. Choose how to travel in an ecofriendly way, and with total freedom.







# Overview

## Technical sheet

---

### General features

- Security frame 3mm thick tubular steel
- 4 hydraulic disc brakes
- Openable sunroof and rear windshield
- Spacious compartments and glove boxes
- Reversing buzzer

### Electric features

- 2 Brushless 48 V electric engines
- Max power: 4 Kw
- Braking energy's recover
- 220V battery charger

### Performances

- Maximum legal speed: 45 Km/h
- Boost (to enjoy more power if you need be)
- Slopes able to exceed: up to 20%
- Sudden steer radius:  
From the center of the outside wheel: 2800 mm radius  
Minimum diameter of steering between walls: 6 m

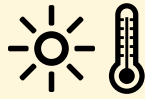
### Dimensions

- (A) Length: 1.740 mm
- (B) Width: 1.030 mm
- (C) Height: 1.565 mm
- (D) Height above ground: 190 mm



# Sets

## Birò Summer



- Electronic Birò Card
- 3 point safety belts
- 175 width rear tyres
- Side maxi mirrors
- USB port
- Two-speed selector + Boost



## Birò Winter



- Everything included in the Summer version
- Removable polycarbonate doors with electric lock on the driver's side
- Laminated defrost grid windscreen
- Foldable umbrella with Birò logo
- Portable Bluetooth speaker



# Batteries

## LITHIUM Re-Move



- Typology: removable battery (44.4V)
- Battery life: up to a 55 Km range\*
- Charge time: 2-4 h  
(Allows partial recharge)
- Absorption: 1.200W

## LITHIUM Maxi



- Typology: non-removable battery (44.4V)
- Battery life: up to a 100 Km range\*
- Charge time: 3-6 h  
(Allows partial recharge)
- Absorption: 1.200W

\* may vary according to temperature, driving style, type of route and weight.

# Basic Colours



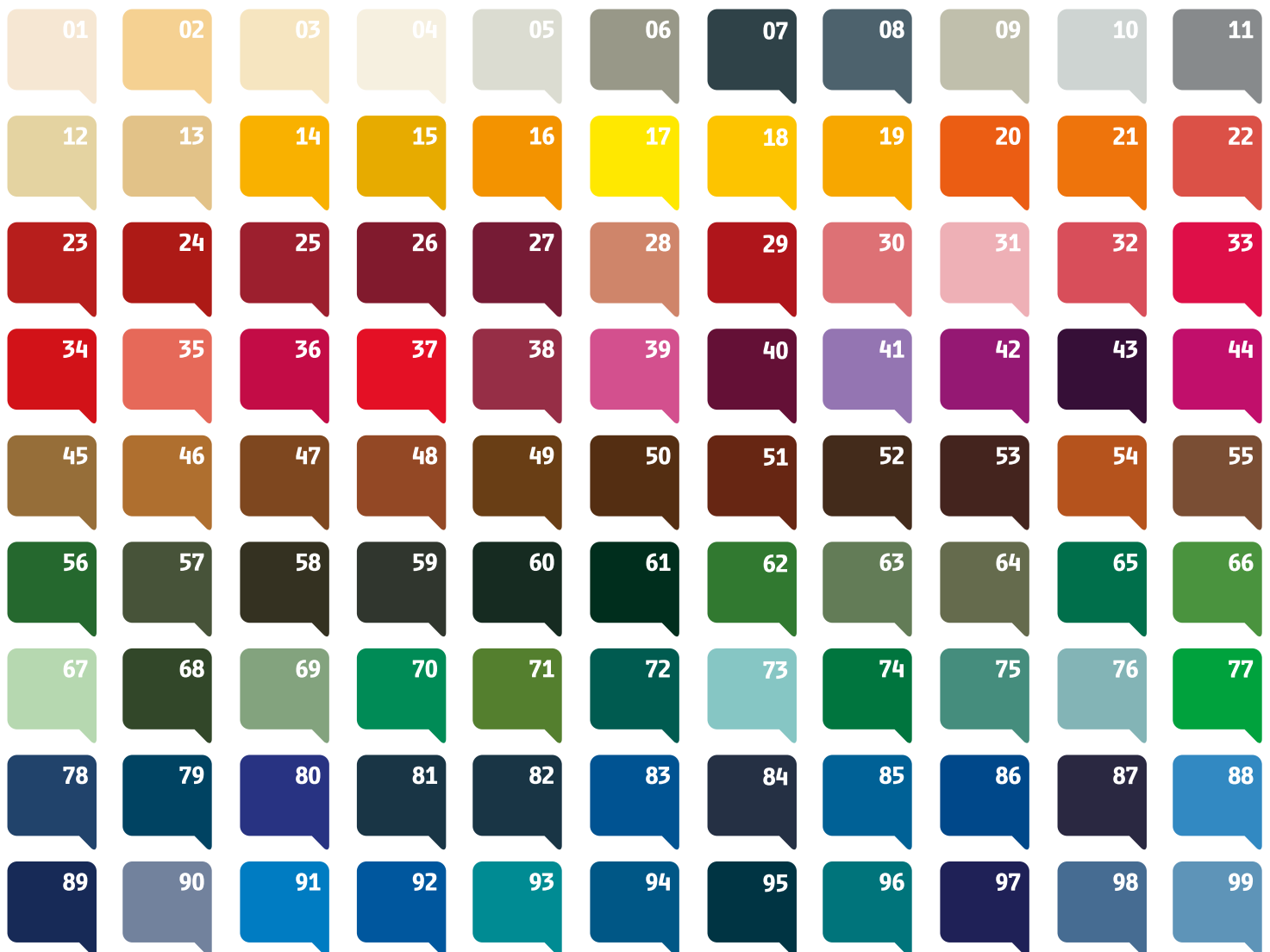
## Colori telaio:

- A** White
- B** Green
- C** Black

The bonnet can be personalised with paint work on request (optional)

# Optional Colours

Customize your Birò by choosing among 99 colours!



## WHITES, GREYS

- 01 RAL 1013 Oyster White
- 02 RAL 1014 Ivory
- 03 RAL 1015 Light Ivory
- 04 RAL 9001 Cream
- 05 RAL 9018 Papyrus White
- 06 RAL 7023 Concrete Grey
- 07 RAL 7026 Granite Grey
- 08 RAL 7031 Blue Grey
- 09 RAL 7032 Pebble Grey
- 10 RAL 7035 Light Grey
- 11 RAL 7046 Telegrey 2

## BEIGES, YELLOWS, ORANGES

- 12 RAL 1000 Green Beige
- 13 RAL 1002 Sand Yellow
- 14 RAL 1003 Signal Yellow
- 15 RAL 1004 Golden Yellow
- 16 RAL 1007 Daodil Yellow
- 17 RAL 1021 Colza Yellow
- 18 RAL 1023 Traffic Yellow
- 19 RAL 1028 Melon Yellow
- 20 RAL 2004 Pure Orange
- 21 RAL 2011 Deep Orange
- 22 RAL 2012 Salmon Orange

## REDS, PINKS, VIOLETS

- 23 RAL 3001 Signal Red
- 24 RAL 3002 Carmine Red
- 25 RAL 3003 Ruby Red
- 26 RAL 3004 Purple Red
- 27 RAL 3005 Wine Red
- 28 RAL 3012 Beige Red
- 29 RAL 3013 Tomato Red
- 30 RAL 3014 Antique Pink
- 31 RAL 3015 Light Pink
- 32 RAL 3017 Rose
- 33 RAL 3018 Strawberry Red

## BROWNS

- 34 RAL 3020 Trac Red
- 35 RAL 3022 Salmon Pink
- 36 RAL 3027 Raspberry Red
- 37 RAL 3028 Pure Red
- 38 RAL 4002 Red Violet
- 39 RAL 4003 Heather Violet
- 40 RAL 4004 Claret Violet
- 41 RAL 4005 Blue Lilac
- 42 RAL 4006 Trac Purple
- 43 RAL 4007 Purple Violet
- 44 RAL 4010 Telemagenta
- 45 RAL 8000 Green Brown
- 46 RAL 8001 Ochre Brown
- 47 RAL 8003 Clay Brown
- 48 RAL 8004 Copper Brown
- 49 RAL 8007 Fawn Brown
- 50 RAL 8011 Nut Brown
- 51 RAL 8012 Red Brown
- 52 RAL 8014 Sepia Brown
- 53 RAL 8017 Chocolate Brown
- 54 RAL 8023 Orange Brown
- 55 RAL 8024 Beige Brown

## GREENS

- 56 RAL 6002 Leaf Green
- 57 RAL 6003 Olive Green
- 58 RAL 6004 Blue Green
- 59 RAL 6005 Moss Green
- 60 RAL 6007 Bottle Green
- 61 RAL 6009 Fir Green
- 62 RAL 6010 Grass Green
- 63 RAL 6011 Reseda Green
- 64 RAL 6013 Reed Green
- 65 RAL 6016 Turquoise Green
- 66 RAL 6017 May Green

- 67 RAL 6019 Pastel Green
- 68 RAL 6020 Chrome Green
- 69 RAL 6021 Pale Green
- 70 RAL 6024 Trac Green
- 71 RAL 6025 Fern Green
- 72 RAL 6026 Opal Green
- 73 RAL 6027 Light Green
- 74 RAL 6029 Mint Green
- 75 RAL 6033 Mint Turquoise
- 76 RAL 6034 Paste Turquoise
- 77 RAL 6037 Pure Green

## BLUES

- 78 RAL 5000 Violet Blue
- 79 RAL 5001 Green Blue
- 80 RAL 5002 Ultramarine Blue
- 81 RAL 5003 Sapphire Blue
- 82 RAL 5004 Black Blue
- 83 RAL 5005 Signal Blue
- 84 RAL 5008 Grey Blue
- 85 RAL 5009 Azure Blue
- 86 RAL 5010 Gentian Blue
- 87 RAL 5011 Steel Blue
- 88 RAL 5012 Light Blue

- 89 RAL 5013 Cobalt Blue
- 90 RAL 5014 Pigeon Blue
- 91 RAL 5015 Sky Blue
- 92 RAL 5017 Traffic Blue
- 93 RAL 5018 Turquoise Blue
- 94 RAL 5019 Capri Blue
- 95 RAL 5020 Ocean Blue
- 96 RAL 5021 Water Blue
- 97 RAL 5022 Night Blue
- 98 RAL 5023 Distant Blue
- 99 RAL 5024 Pastel Blue



The brochure was correct at the time of printing. However, Estrima policy is one of continuous product development. The right is reserved to change specifications, colours, descriptions, illustrations, pictures and prices of the models and items illustrated and described in this publication at any time. For the latest details always consult Estrima S.r.l. or an Estrima dealer. Throughout this publication, wherever a feature is described as "Optional", you should assume that it will be at extra cost to the base vehicle, unless specifically stated to the contrary. All models and colour combinations are subject to availability. Some images portrayed are of a pre-production model and/or are computer generated, therefore, the design/features on the final version of the vehicle may differ in various respects. In addition, some of the features shown on the vehicles may be optional. Copyright © Any modification, imitation and reproduction, part or complete, of contents and graphics without prior authorization from Estrima S.r.l. is strictly forbidden.

03.01 05.2016





**Estrima S.r.l.**

Via Roveredo 20/b  
33170 Pordenone (PN), Italy  
T (+39) 0421 760365  
info@estrima.com

**[www.estrima.com](http://www.estrima.com)**